



WEST WISCONSIN  
LAND TRUST

# OPEN SPACES

FALL 2005

VOLUME 9, NUMBER 2



## Californians Conserve Apple River

by Rick Remington

As the Apple River winds through Polk County's small family farms, forests and villages, numerous wetlands and streams contribute to the flow on its way to the St Croix. The diverse wetland complexes not only provide a filter for water entering the Apple River, but also provide numerous habitat benefits for wildlife including deer, bear, songbirds and waterfowl, as well as many unique assemblages of aquatic plants.

When West Wisconsin Land Trust received a call from Jim Williamson last spring saying he and his wife, Francine Lipman, wanted to protect their corner of Polk County from development, we hopped right to it. Discussions with Jim led to the realization that a substantial wetland on the

200-acre property has been home to successfully nesting trumpeter swans for almost ten years.

In 1935, the Williamson family purchased an 80-acre Polk County farm for \$900, considerably less than today's real estate prices.

Years later, when Jim and Francine moved to California for work, they continued to maintain their Polk County roots through hunting trips and Jim's hobby of managing the property's fields and forests.

Soon, they began to see the landscape around the family farm changing as subdivision and development crept into every corner of the area. Over time, Jim purchased several pieces of property, including the [continued on page 10](#)

*"I just didn't want to see it developed, period."* -Jim Williamson



## WEST WISCONSIN LAND TRUST

### OPEN SPACES

is published by  
West Wisconsin Land Trust,  
a private, nonprofit land trust  
organization, dedicated to  
preserving western Wisconsin's  
natural character.

#### Board of Directors

Linda Keefe, President,  
Maiden Rock  
John Goetz, Vice-President,  
Minneapolis, Minnesota  
Barbara Thomas, Secretary,  
Menomonie  
Scott Nicastro, Treasurer,  
Eau Claire  
Earl Anderson, Arkansasaw  
Sandy Anderson, Gordon  
Steve Clark, Cushing  
Robert Cropp, Durand  
Joe Kingman, St. Paul, Minnesota  
Bill Lamb, Menomonie  
Kathy Olson, Eau Claire  
Wayne Peterson, Glenwood City  
Curt Rohland, Curtiss  
Steve Thaler, Chippewa Falls

#### Staff

Jane Anklam, Land Program  
Project Specialist  
Bill Dingwall, Education Director  
Michelle Dingwall, Director of  
Development & Communications  
Rick Gauger, Executive Director  
Britta Lee, Land Program  
Project Specialist  
Joan Myers, Administrative Asst.  
Rick Remington, Land Program  
Director

#### West Wisconsin Land Trust Offices

500 East Main Street, #307  
Menomonie, WI 54751  
(715)235-8850

N7479 Liesch Road  
PO Box 187  
Trego, WI 54866  
(715)635-8614

[www.wwlt.org](http://www.wwlt.org)

# Note Worthy

## GIS Mapping System

Thanks to grants from Nelson, Tietz & Hoyer and the Greater Menomonie Area Community Foundation, West Wisconsin Land Trust purchased a GIS mapping system earlier this year. Summer intern Mike Molnar helped acquire data and built the system to include topographic features as well as aerial photos for our entire 18-county service area.

The GIS mapping system will help West Wisconsin Land Trust conserve land more effectively in several ways. By mapping all currently protected properties, we will be able to work more strategically and create larger contiguous blocks of protected farmland or natural areas. The GIS system will also enable our staff to better collaborate with agencies and other conservation organizations to protect regional resources.

Starting with this issue of *Open Spaces*, each article about a protected property will include a regional map and an aerial photo. We hope this addition helps readers identify a specific area and appreciate a property's natural features.

## WWLT Project Featured in New Book

WWLT's work with Common Harvest Farm in Osceola is featured in a recently published book entitled *Groundswell: Stories of Saving Places, Finding Community*. In her book, Alix Hopkins describes several grassroots conservation projects across the country. She chose to include Common Harvest Farm because the project illustrates the growing interest in community-supported agriculture in the Midwest. Common Harvest Farm is owned by Dan Guenther and Margaret Pennings, and was conserved by WWLT (formerly Wisconsin Farmland Conservancy) in 1997.

## Volunteer Recognition Picnic

West Wisconsin Land Trust staff thanked volunteers at a picnic held on Sunday, September 11. Over thirty volunteers and family members gathered at the Maiden Rock Legion Post for an afternoon of food and festivities. The Legion Post is adjacent to WWLT protected property in the Pine Creek watershed.

WWLT Executive Director Rick Gauger thanked everyone for their assistance with various WWLT activities this year. He also acknowledged Board member and Volunteer Coordinator, Kathy Olson, for her tireless efforts in jump-starting the volunteer program.

Guests of all ages enjoyed an education program led by Bill Dingwall, WWLT Education Director. Bill led activities and discussions about the water cycle, and invited participants of all ages to explore the wildlife in Pine Creek.

Armed with small nets, guests waded into the creek and instantly found hundreds of scuds, small invertebrates that serve as an important food source for trout.

WWLT welcomes those interested in volunteering for a variety of activities. Please call (715-235-8850) or email us at [wwlt@wwlt.org](mailto:wwlt@wwlt.org) to learn more about becoming involved and further making a difference in the future of western Wisconsin. 🌱



# Enthusiastically Opportunistic

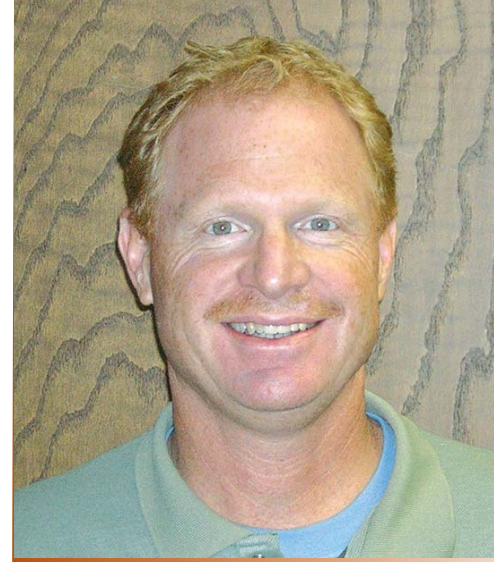
I participate in numerous dialogues designed to determine what should or should not be conserved. And some days, I'm just like an old-time farmer. I look around and say, "Wait a minute, what *shouldn't* be preserved?"

West Wisconsin Land Trust is committed to preserving as much of western and northwestern Wisconsin as we possibly can. Sure, we know that lands with water on them are more critical than other parcels. Over the past ten years we've prioritized certain areas such as the lakes in Burnett, Douglas, Washburn, Bayfield, Sawyer, Chippewa, Rusk and Polk counties, and the watershed of the St. Croix River. But what about the little prairie remnant on an 80-acre parcel right outside of Somerset, or the development on the Apple River south of New Richmond? Do we walk away from those projects because they are outside of an established conservation priority area? No!

Basically, this organization is enthusiastically opportunistic about our mission. We are moving as fast as we can to partner with as many people as possible: land owners, community groups, lake associations, and municipalities in the rapid suburban sprawl areas. We know, as you do too, that we only get one shot at this, and then the land is gone.

Yes, we focus. We plan. We have priority areas. But we are primarily driven by the people that live, work and recreate in western and northwestern Wisconsin. So we listen to you, our members, as we create priorities using excellent resources from the Wisconsin DNR, eco-regional plans of the Nature Conservancy, and the planning of local townships and lake associations. We blend it together, and then move as aggressively as we can to secure land protection opportunities. This year we are privileged to add a couple of new partners to our list of active collaborators: the Prairie Enthusiasts (TPE) and Trout Unlimited (TU). We're excited about combining efforts on joint projects in western Wisconsin.

As members, your support pushes us ahead and down those country roads towards immediate action. Together, our conservation efforts result in achievements we can all be proud of. ❁



by Richard E.  
Gauger

Executive Director

## WWLT Welcomes National Land Trust Conference

Sixteen representatives from WWLT's board and staff went to Madison October 14-17 for "Rally 2005", the national Land Conservation Conference hosted by the Land Trust Alliance. West Wisconsin Land Trust's attendees represented the largest number from one Wisconsin organization, and were among the most representing any land trust in the country.

Rally 2005, entitled "Conservation in the Heartland", featured more than 100 different seminars and workshops, ranging from maintaining biodiversity to organizational management. This was the 18<sup>th</sup> annual conference, and drew more than 1,600 of the nation's top conservation leaders. Keynote speakers included Robert F. Kennedy, Jr., author of *Crimes Against Nature*, and William Cronon, author of *Saving Nature in Time: The Past and the Future of Environmentalism*.

"Board members who attended Rally participated in seminars and learned additional information that will undoubtedly

help West Wisconsin Land Trust continue to grow and address the unprecedented loss of open spaces in western Wisconsin," said Linda Keefe, Board President.

Another feature at Rally 2005 was a free, four-hour seminar for landowners. Stephen J. Small, a renowned expert on private land conservation and author of *Preserving Family Lands*, discussed specific details about conserving private property with a limited number of participants. Fifteen landowners responded to WWLT's invitation to the seminar, and enjoyed participating in this unique opportunity.

As a member of the local host committee for Rally 2005, West Wisconsin Land Trust was proud to welcome colleagues from around the country and around the world to Wisconsin. ❁



## Educating Wisconsin's Future Stewards

by Patrick McRaith

### Upcoming Education Programs

Saturday, 11/12 9:30 a.m. - Noon

#### Outdoor Survival 1

Did the snow cover your tracks back? No worries! Learn ways to improve your chances of survival, how and when to get your basic needs, and then work together to achieve gold in the Survival Olympics. Pine Creek, SW Pierce County

Sunday, 11/13 1:00 - 3:30 p.m.

#### Outdoor Survival 2

Make fires like the Voyageurs with flint and steel or a bow drill, build a shelter that will keep you warm below freezing, and learn basic field first aid. Pine Creek, SW Pierce County

Thursday, 12/8 6:30 - 8:00 p.m.

#### Night Hike

Discover the nocturnal world by seeing with your feet, echo-locating a moth, or finding a friend with your nose. Hoffman Hills, Menomonie

Sunday, 12/11 1:00 - 3:15 p.m.

#### Magnificent Maps

Learn the basics of map use, some orienteering tricks, and then test your skills on a small map course. Hoffman Hills, Menomonie

Saturday, 12/17 6:30 - 8:00 p.m.

#### Night Hike

Discover the nocturnal world by seeing with your feet, echo-locating a moth, or finding a friend with your nose.

Maiden Rock Bluff, NW Pepin County

Over the past 17 years, West Wisconsin Land Trust members have helped protect western Wisconsin's natural character by providing conservation solutions to the non-stop development that is taking place in western and northwestern Wisconsin. To further preserve the quality of life, and to encourage stewardship of our natural resources today and tomorrow, the Education Program was established this past summer.

The Education Program offers free, hands-on learning opportunities for families, community organizations and schools. Offering up to 50 different courses for participants aged five and up, the program is helping to educate western Wisconsin's newest environmental stewards. Courses such as "By The Birds", "Dirt Camp!",

*"People don't miss something they never knew."*

*-Jack Lorenz*

and "Night Hike (by foot or snowshoe)" offer information in a fun and relevant format that increases kids' understanding and appreciation for nature.

The Education Program is directed by Bill Dingwall, who received his bachelor's degree in Conservation from UW-River Falls, and his Masters of Education in Outdoor Recreation from the University of Minnesota.

Before Bill brought his considerable experience to our organization, he shared his passion for the environment with kids as a counselor at Como Park Zoo and [continued on page 9](#)

To register for programs contact Bill Dingwall at 715-235-8850 or e-mail him at [bdingwall@wwlt.org](mailto:bdingwall@wwlt.org).

# Foresight + Partnership = Preservation

## Henkes Preserve Property and Restore Wetlands

by Patrick McRaith and Michelle Dingwall

Bill and Pat Henke have continued their tradition of conservation by protecting an 80-acre farm between Eau Claire and Chippewa Falls, Wisconsin.

When Pat Henke inherited the farm from her mother, she knew it had to be protected from encroaching development.

Pat and her husband Bill also knew that West Wisconsin Land Trust could help them conserve this important tract of land. This was their second conservation easement with WWLT. In 2003, they protected 160 acres of natural land in Eau Claire County.

Considered by some to be just a cornfield, the recently protected farm sits just north of Eau Claire and just south of Chippewa Falls.

As many locals know, the two cities are growing—and growing into each other. With the recently completed addition to Highway 29 connecting local residents to Highway 53 and Interstate 94, the area is primed for development.

With modern subdivisions just a half mile away, the Henkes' farm represents what could someday be the remaining green space in the area. "Protecting this property means so much to me and my family," said Pat Henke. "It's like preserving a piece of our family's history."

Pat's parents, Sherman and Ragnhild Preston, bought the farm in 1940 from the Federal Land Bank. Their interest in conserving farmland influenced Pat at a

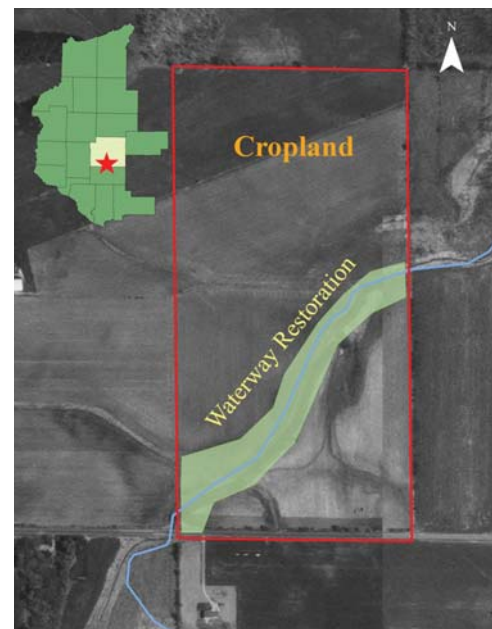
young age. So when her mother recently passed away, Pat learned of an opportunity to do a post-mortem conservation easement to protect the land and fulfill her parents' wishes.

In addition to placing a conservation easement on the property, the Henkes have gone one step further in protecting its natural features. Bill and Pat are working with Chippewa County Land Conservation Department to restore 20 acres of wetland and native prairie habitat through the Conservation Reserve Enhancement Program (CREP). The Henkes' property is about one mile away from a DNR Waterfowl Production Area, and includes a headwater stream and wetland complex—all are critical pieces for protecting diminishing waterfowl habitat.

"This project illustrates the incredible foresight by Pat and Bill, protecting the farm and then moving to restore its natural features for waterfowl habitat," said Rick Gauger, WWLT Executive Director.

"This is how partnerships should work—private citizens working with local governments and a regional land trust. Together we can accomplish much more," he added.

Through a continued partnership with West Wisconsin Land Trust and the Chippewa County Land Conservation Department, the Henkes have reduced the financial burden of the inheritance, while accomplishing their ultimate goal: protection of this special place. ❁





© Lee Karney  
U.S. Fish & Wildlife Service

# Heron Rookery Project

by Michelle Dingwall

On a small, quiet lake in northern Burnett County is a stand of towering aspens filled with nearly 100 large nests. To many observers, this is quite an unusual sight. Indeed, great blue herons are rather discerning when selecting a nesting site, and often choose those not readily visible to humans.

Great blue herons, like many other birds, suffered greatly from the use of DDT. The harmful pesticide ran off into lakes and rivers, tainting the water as well as the fish and frogs that herons eat. After DDT was banned in 1972, great blue herons started making a comeback. However their population is declining again, largely due to habitat loss. They are now listed as a special-concern species in Wisconsin.

This may come as a surprise to you. Many of us have seen individual great blue herons in western Wisconsin. However, great blue heron *rookeries* are quite rare—and are disappearing rapidly. These birds only nest in large groups, and there are fewer and fewer undisturbed nesting sites in Wisconsin.

“The Bureau of Endangered Resources of the Wisconsin DNR is concerned that the great blue heron may be listed as threatened in the not-too-distant future if current trends continue. Heron rookeries are being lost at alarming rates throughout the state,” said Nancy Christel, WDNR Wildlife Biologist.

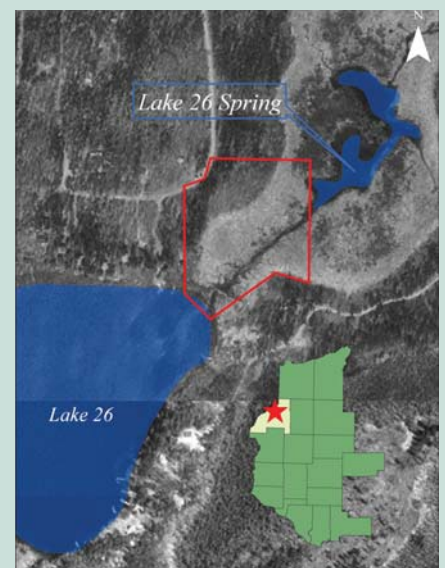
The residents of Lake 26 in northern Burnett County have always appreciated the heron rookery on their lake. They take

## You Can Help

Once in a while, we have the opportunity to contribute to a unique project. Conservation of this 11-acre parcel will benefit generations of great blue herons and local residents alike. Protection of the heron rookery also provides critical protection of Lake 26 itself. Lake 26 Springs provide valuable spawning habitat for several species of fish, and is a major supplier of fresh water for Lake 26. If the property was developed, the quality of Lake 26 would be significantly impacted.

Total project cost	\$140,000
Private contributions received to date	\$ 65,000
Wisconsin DNR grant	\$ 65,000
Remainder	\$ 10,000

Please consider a gift to the Lake 26 Heron Rookery Fund. Your contribution will help preserve this critical habitat and help ensure these beautiful birds continue to grace the lakes and rivers of northwestern Wisconsin.



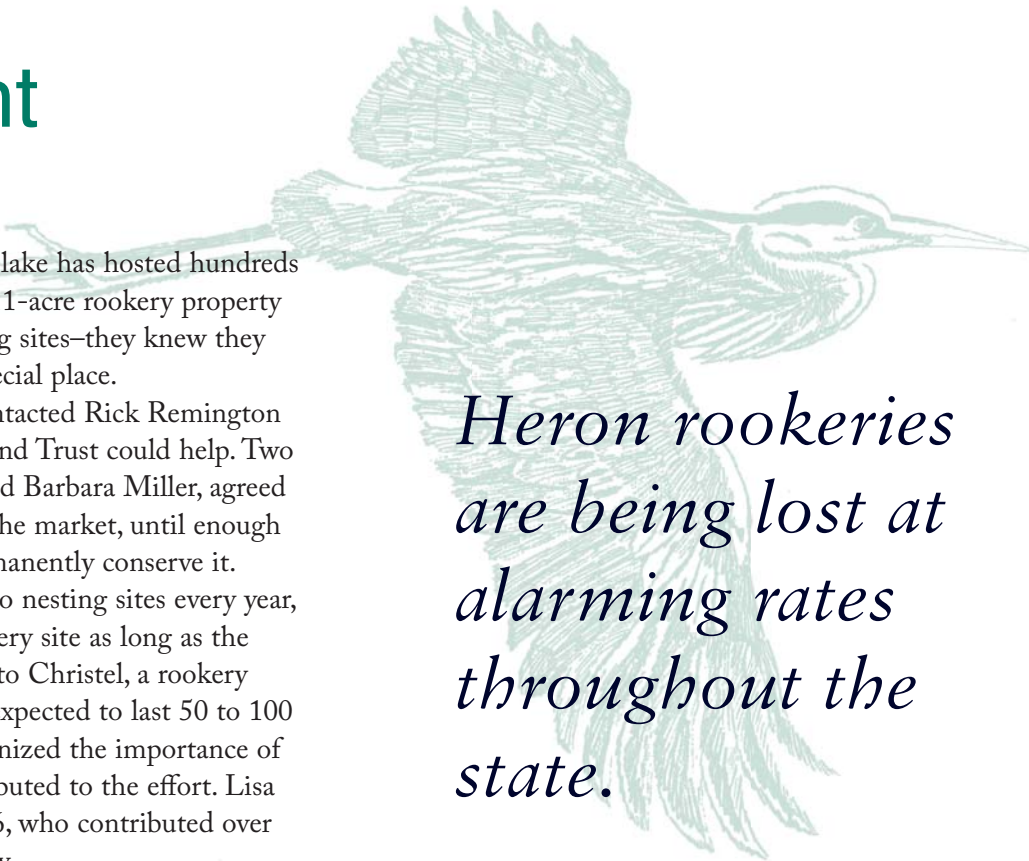
# ct Takes Flight

pride in knowing that their clear, quiet lake has hosted hundreds of herons over the years. So when the 11-acre rookery property went up for sale—with potential building sites—they knew they had to do something to protect this special place.

Lake 26 homeowner, Lisa Peters contacted Rick Remington last fall to see how West Wisconsin Land Trust could help. Two of the other lake homeowners, Greg and Barbara Miller, agreed to purchase the property to take it off the market, until enough money was raised to purchase and permanently conserve it.

Although most birds do not return to nesting sites every year, great blue herons repeatedly use a rookery site as long as the conditions are undisturbed. According to Christel, a rookery like the one found on Lake 26 can be expected to last 50 to 100 years or more. Many people have recognized the importance of protecting the rookery, and have contributed to the effort. Lisa rallied the other landowners of Lake 26, who contributed over \$65,000 towards conserving the rookery.

To further enable its conservation, the Millers generously agreed to a “bargain sale” (sell the property for less than they purchased it). WWLT is pursuing grant opportunities through the WDNR, but will need an additional \$10,000 before the project may be completed. Please consider a contribution to the Heron Rookery Conservation Project, and help us protect this critical habitat. ❁



*Heron rookeries  
are being lost at  
alarming rates  
throughout the  
state.*



# Life in the North Woods

by Jane Anklam



If a tree falls in the forest and no one is there to hear it, does it make a sound? In the north woods, the answer is a resounding “YES!”

This is a much beloved place. Many of us are tied emotionally, nostalgically, spiritually, or economically to these woods that stretch north from State Highway 8 to the shores of the Great Lake Superior. Its wildness and vastness taps our sense of imagination and adventure, whether that’s a wilderness canoe trip down the “wild and scenic” St. Croix River, or fishing off grandpa’s dock in one of the thousands of inland lakes in the region. This is a place away from the pace of hectic modern society.

From the land protection perspective, what is the threat to this pristine wilderness? Possibly the greatest threat is the perception that there is no threat at all. We do not often consider the north woods as threatened by development, when it may, in fact, be “loved to death”. Consider these facts:

- Between 1965 and 1995, there was a 216 percent increase of houses on lake frontage north of Highway 29.<sup>1</sup>
- The average cost of lakeshore frontage now is about \$2,500/ft. In the late 1960s, the same property sold at \$250/ft.<sup>1</sup>
- With 267 miles of its 365 miles of inland lakeshore in private hands, Douglas County is planning for

higher levels of burden on their water resources as each cabin, cottage and home is constructed.<sup>2</sup>

- As lakeshore property becomes fully developed, the trend now is for smaller trout streams and wetland properties to be divided, sold and developed.<sup>3</sup>

Despite this growth, local residents are becoming increasingly active in preserving the character of the north woods. That work is beginning to pay off:

- Of the 960+ lakes in Washburn County, only three have Eurasian Water Milfoil, which has severely impacted dozens of lakes elsewhere in the state.<sup>4</sup>
- Native rice beds are being restored through partnerships with Native American tribes, with a growing number of them on private lands.<sup>3</sup>
- The globally significant St. Louis River freshwater estuary, which contains the world’s largest freshwater sand bar, is being restored to glistening health as major federal, state and local hazardous site clean-ups commence.<sup>5</sup>
- The federally endangered fly honeysuckle, gone since 1897, has been re-discovered. The population rebound of the listed Piping Plover is also cause for cautious optimism.<sup>2</sup>

Land conservation plays a key role in preserving all of the natural characteristics of the north woods. West Wisconsin Land Trust is currently working with landowners and municipalities in the St. Croix River Watershed and the Lake Superior Basin to make them aware of land protection opportunities. Together, we can ensure the region’s unique natural features remain treasures for generations to come.

1. UW-Extension
2. Douglas County Land and Water Resource Management Plan
3. Wisconsin DNR
4. Washburn County Association of Lakes and Rivers
5. St. Louis River Citizens Action Committee

above: piping plover © Gene Nieminen U.S. Fish & Wildlife Service

left: watermilfoil © Brian Prechtel USDA



# Music Teacher's Vision is a Symphony for the Environment

by Rick Gauger

Chances are you may have taken a music class from Dorothy Heller if you went to school in Birchwood, Stratford, Seneca, Elmwood, Maiden Rock, Gaylord, Park Falls, Rhineland, Philips, Clintonville or Unity. Yes, Dorothy Heller taught Music, English, and other subjects in each of these schools from the 1940s to the early 1970s. Dorothy was born in rural Elmwood in 1918, where she resides now, next to her sister Ethyl's family on a six-acre country lot.

If you spend enough time with Dorothy you'll discover some of her life-long interests, the first of which is music. It's easy to discern because, as she discusses her life and work, she lights up as she relives her days as a music teacher. She remembers the first notes played by some of the orchestras she participated in, splendid concertos she has listened to, and special students she taught along the way.

Dorothy's second passion is for the outdoors, learned from her father's conservation values, and accompanied by the music she hears from her favorite birds. Dorothy learned about birds from

her Aunt Irene in Florida. "Ritzy, ritzy, ritzzzeet." She quietly mimicked the call of the Cerulean Warbler, a bird that she says inhabits her woods near Elmwood and Eau Galle.

Dorothy's humble personality has blessed numbers of people over the years. Now, in her later years she has chosen to bless our organization with a bequest. Upon her death, Dorothy has directed her advisors to contribute part of her investments and estate to the West Wisconsin Land Trust.

Gifts wisely requires careful thought, and Dorothy understands that the Land Trust is preserving her values by protecting the rural countryside in western Wisconsin. She wants to know that well into the future, people will be able to walk under the shaded boughs of the white cedars and listen to the song-birds of the north woods.

The work of the West Wisconsin Land Trust is permanent work; the properties that are protected are preserved forever. The long-term support we receive from supporters in the form of planned gifts and bequests is one of the keys to

our long-term success and viability.

When asked what guides her philanthropic decisions, Dorothy replied, "I am really concerned about endangered species and I want to support organizations that are getting something done."

Through planned giving, Dorothy is ensuring that the symphony of the environment will continue for generations to come. ❁



## Future Stewards, continued from page 4

Conservatory, Environmental Educator at YMCA Camp St. Croix, and senior Trail Staff at Wilderness Inquiry.

"I love nature and I love people. Outdoor Education is a perfect combination. There's nothing like watching people discover the natural world around them," said Bill Dingwall, West Wisconsin Land Trust's Education Director.

Programming began on August 21<sup>st</sup> with "Tree Time" at Hoffman Hills State Recreation Area, near Menomonie.

Participants of all ages enjoyed exploring forest life and decay, while learning about tree anatomy and the importance of trees to humans and wildlife.

In addition to family programs, West Wisconsin Land Trust has established a partnership with the Menomonie School District. Utilizing Menomonie's school forest, this partnership will assist staff in bringing outdoor education to nearly 4,000 students. Bill will also be able to customize programs for local scout troops to help them attain merit badges for a variety of outdoor skills.

"Bill's enthusiasm and knowledge make learning fun for all ages," said Rick Gauger, Executive Director. "The Education Program will bring West Wisconsin Land Trust to the next level, by investing in youth and families for the future of conservation in western Wisconsin." ❁



# Californians Conserve Apple River

*continued from the cover*

recently protected 200 acres, in hopes of protecting that special corner of the world he called home.

“I felt like that little boy who held back the floodwaters by sticking his finger in the dam,” Williamson commented.

The protected 200-acre property is a wonderful testimony of two landowners’ careful management of natural resources. Well-managed timber stands surround diverse sedge meadows and wetlands. On a recent morning visit to the property, I saw ducks, geese, sandhill cranes and trumpeter swans, all in one large wetland alongside the township road.

The conservation agreement between Jim and West Wisconsin Land Trust will allow the land to remain in private hands, while protecting its resources. There are no home sites on the property, and that’s how it will remain.

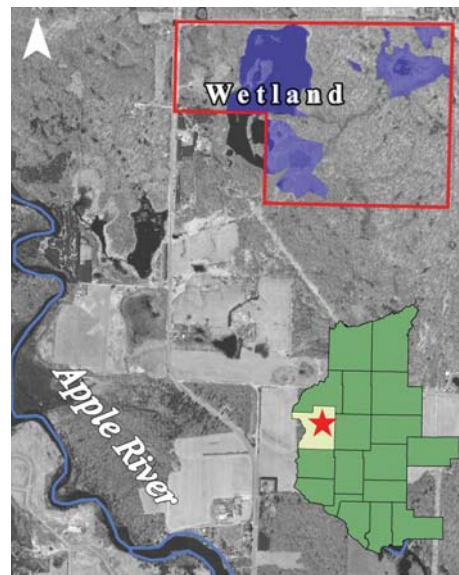
When I asked Jim why he protected his property this way, he stated simply, “I just don’t want it developed, period. Then again,” he said, “maybe this is the same mentality of the fool who purchased and set aside Central Park in New York.” In the eyes of West Wisconsin Land Trust, Jim is certainly no fool.

Perhaps Jim gained his conservation ethic growing up in rural Polk County, or perhaps while studying at Northland College in Ashland, a renowned environmental liberal arts college, where he now sits on the Board of Trustees. Regardless, citizens of Polk County and western Wisconsin owe Jim and Francine a debt of gratitude for their part in preserving our natural treasures. ❁

*“Undeveloped wetlands like this are important to nesting swans. The complex of wetlands from east of Balsam Lake to Joel Marsh provides important habitat for swans, as well as ducks and geese. Keeping a wetland like this protected from development is keeping a piece of the critical wetland habitat puzzle in place so there will always be some quality habitat available.*

*Nice job!”*

*-Kevin Morgan,  
Wildlife Biologist,  
Wisconsin DNR*



sandhill cranes  
© Donna Dewhurst, U.S.  
Fish & Wildlife Service

# Notes from the Field

With over 500 acres of land owned and managed by West Wisconsin Land Trust, and 12,000 acres conserved via conservation agreements, the membership, board and staff of WWLT are making a truly significant and long-lasting mark on western Wisconsin. Each year brings new challenges and the possibility of new and exciting land protection projects, which we eagerly dive into. After all, time is of the essence when the rate of development and fragmentation we see today far outpaces the land protected.

But each successful project, whether it is the acquisition of land or the numerous partnerships with private landowners, brings a unique set of challenges and responsibilities. Areas managed as preserves often need management and restoration, public facilities such as trails and parking, or issues addressed such as vandalism and boundary encroachment.

Conservation easements with private landowners require annual monitoring to ensure compliance and often require review of various permitted activities such as reserved home sites, timber management practices or restoration agreements. Many properties conserved in the early '90s are now experiencing a new generation of landowners, as property changes hands or is passed to heirs. This second generation of landowners may not be as familiar with the agreements and likely have numerous questions. Successive generations are often more likely to violate the agreements, requiring potential enforcement or legal action. Needless to say, most of this work is quite enjoyable, as owners and buyers of conserved properties are often strong advocates of WWLT's mission and are quite proud to be a cog in the conservation wheel of western Wisconsin.

To address our growing responsibility, WWLT has started a pilot volunteer easement monitoring program. Volunteer Monitors are the ears, eyes and ambassadors for WWLT. The staff still visit conserved properties, but volunteers save us innumerable hours and dollars, as well as meet many great and interesting people. With the acceptance of each conservation agreement, WWLT also requests a contribution to its long-term land stewardship endowment fund. In a study done by Minnesota Land Trust, an average conservation easement requires a sum of \$15,000 to monitor and enforce it throughout its perpetual life. This pool of funds will ensure landowners are aware of and remain in compliance with agreement terms, which becomes increasingly difficult as each successive generation passes. With the addition of a WWLT education program, we also hope to educate landowners about the importance of conservation, sound land management practices, and the vital role we play as conservationists in the private sector.

As we look ahead to the new and exciting projects of 2006, it is important that the staff, board and membership remember the big picture. Remember an exciting cover story from *Open Spaces* in years gone by that spoke to you. Remember the excitement of the landowners as they embarked on a lifetime of stewardship on their lands. And remember the long-term responsibility they have entrusted to West Wisconsin Land Trust. ❁

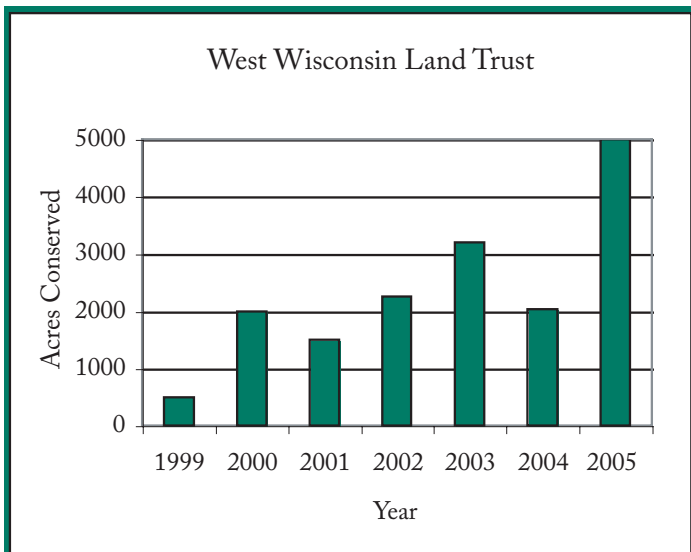


by Rick  
Remington

Land Program  
Director



# WWLT on Track for Best Year Yet



Thanks to the generous support of members like you, West Wisconsin Land Trust is on track to conserve nearly 5,000 acres this year! From a 2-acre town park in Martell to a 2800-acre state park near Luck, we are truly making a difference in the future of western Wisconsin. Thank you for making our work possible.

Unfortunately, our work is far from done. Western Wisconsin loses thousands of acres to irresponsible development every year. Please renew your membership if you haven't done so recently. Or, if your membership is current, consider an additional gift. Your contribution really makes a difference in our ability to help shape the future of western Wisconsin for the benefit of generations to come.

Your membership expiration date is printed on the address label below. If you'd like to renew, please send your gift in the enclosed envelope. You may also contribute by phone (715-235-8850) or online at [www.wwlt.org](http://www.wwlt.org).

*Thank you for making a difference in the future of western Wisconsin.*

Not a member of West Wisconsin Land Trust?  
Join today and help preserve farms and natural  
areas for generations to come!

\_\_\_ \$35 Cultivating Member    \_\_\_ \$50 Harvesting Member  
\_\_\_ \$100 Sustaining Member

Students and seniors take \$10 off any category!

I N F O R M   •   F A C I L I T A T E   •   P A R T N E R   •   P R O T E C T



**WEST WISCONSIN  
LAND TRUST**

500 East Main Street, Ste. 307  
Menomonie, WI 54751  
[www.wwlt.org](http://www.wwlt.org)

nonprofit org  
**POSTAGE  
PAID**  
permit #203  
Eau Claire, WI

Address Service Requested

